

LOCATED IN:
S.E. 1/4, N.W. 1/4, SEC.
12, T. 25 N., R. 3 E., W. M.

NOTES

- THIS SURVEY WAS PERFORMED BY FIELD TRAVERSE USING A 10 SECOND "TOTAL STATION" THEODOLITE SUPPLEMENTED WITH A 100 FT. STEEL TAPE. THIS SURVEY MEETS OR EXCEEDS THE STANDARDS FOR LAND BOUNDARY SURVEYS AS SET FORTH IN WAC CHAPTER 332-130-090.
- CONTOUR INTERVAL = 1 FT.

UNDERGROUND UTILITY NOTE

UNDERGROUND UTILITIES AS SHOWN HEREON ARE BASED UPON CITY OF SEATTLE GIS, AND BY THE LOCATION OF UTILITY PAINT MARKS BY OTHERS. THIS INFORMATION IS VERIFIED IN THE FIELD BY THIS FIRM, WHERE POSSIBLE, BY FIELD TIES TO ABOVE GRADE UTILITY STRUCTURES. CHADWICK AND WINTERS ASSUMES NO LIABILITY FOR THE ACCURACY OF THOSE RECORDS & LOCATIONS OR ACCEPTS RESPONSIBILITY FOR UNDERGROUND UTILITIES NOT DISCLOSED IN SAID RECORDS. THE FINAL LOCATION OF EXISTING UNDERGROUND UTILITIES IN AREAS CRITICAL TO DESIGN SHOULD BE ESTABLISHED BY CONTACTING THE UTILITY OWNER OR AGENCY. 1-800-424-5555 SHOULD ALWAYS BE CALLED PRIOR TO CONSTRUCTION.

MONUMENT LISTINGS

PUBLISHED BENCHMARKS

VERTICAL DATUM

SOURCE: WASHINGTON STATE DEPT. OF TRANSPORTATION
ID#: 2883
DESCRIPTION: WSDOT BRASS DISK CEMENTED INTO DRILL HOLE AND SET LEVEL WITH CONCRETE SURFACE
LOCATION: IN CONCRETE SIDEWALK AT THE N.W. CORNER OF SR 099 BRIDGE OVER N. 46TH ST.
ELEVATION: 292.772 FT. (NAVD'88)

HORIZONTAL DATUM

OWNER: WASHINGTON STATE DEPT. OF TRANSPORTATION
ID#: 2883
DESCRIPTION: WSDOT BRASS DISK CEMENTED INTO DRILL HOLE AND SET LEVEL WITH CONCRETE SURFACE
LOCATION: IN CONCRETE SIDEWALK AT THE N.W. CORNER OF SR 099 BRIDGE OVER N. 46TH ST.
NORTHING: 245,179.644 (NAD 83/98)
EASTING: 1,267,318.942 (NAD 83/98)

SITE BENCHMARK

VERTICAL DATUM

SOURCE: GPS OBSERVATION
ID#: N/A
DESCRIPTION: MONUMENT IN CASE
LOCATION: 20 FT. NORTH OF THE INTERSECTION OF CENTERLINES OF N.W. 56TH ST. AND 9TH AVE. N.W.
ELEVATION: 73.78 FT. (NAVD'88)

HORIZONTAL DATUM

OWNER: CITY OF SEATTLE
ID#: N/A
DESCRIPTION: MONUMENT IN CASE
LOCATION: 20 FT. NORTH OF THE INTERSECTION OF CENTERLINES OF N.W. 56TH ST. AND 9TH AVE. N.W.
NORTHING: 247,982.2350 (NAD 83/98)
EASTING: 1,262,173.4090 (NAD 83/98)
VALUE WAS DERIVED BY DIRECT OBSERVATION UTILIZING GPS EQUIPMENT ON NOVEMBER 26, 2019

CALCULATED INTERSECTION AS PER CITY ENGINEER'S 1/4 SECTION MAP INFO.
N=248,239.8202
E=1,261,647.8593

CENTERLINE MONUMENT FOUND EXISTING MONUMENT IN CASE ON NOV. 26, 2019
N=248,244.8190
E=1,261,647.9680

CALCULATED INTERSECTION AS PER CITY ENGINEER'S 1/4 SECTION MAP INFO.
N=248,229.2518
E=1,262,178.7388

CENTERLINE MONUMENT FOUND EXISTING MONUMENT IN CASE ON NOV. 26, 2019
N=247,978.8432
E=1,261,642.1805

CALCULATED INTERSECTION AS PER CITY ENGINEER'S 1/4 SECTION MAP INFO.
N=247,973.8444
E=1,261,642.0726

CENTERLINE MONUMENT FOUND EXISTING MONUMENT IN CASE ON NOV. 26, 2019
N=247,982.2350
E=1,262,173.4090

CALCULATED INTERSECTION AS PER CITY ENGINEER'S 1/4 SECTION MAP INFO.
N=247,962.2397
E=1,262,172.9758

11TH AVE. N.W.

9TH AVE. N.W.

N.W. 57TH ST.

N.W. 56TH ST.

R/W

R/W

TAX NO. 2768100040

TAX NO. 2768100065

TAX NO. 2768100060

TAX NO. 2768100045

TAX NO. 2768100050

SHEET 1 OF 3

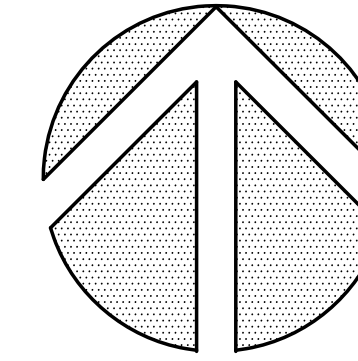


DATE: 12/23/19

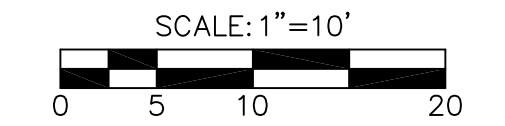
TOPOGRAPHIC SURVEY
901 N.W. 57TH ST. & 5609 9TH AVE. N.W.
SEATTLE, WASHINGTON

CHADWICK WINTERS
LAND SURVEYING AND MAPPING
1422 N.W. 85TH ST., SEATTLE, WA 98117
PHONE: 206.297.0996
FAX: 206.297.0997
WEB: WWW.CHADWICKWINTERS.COM

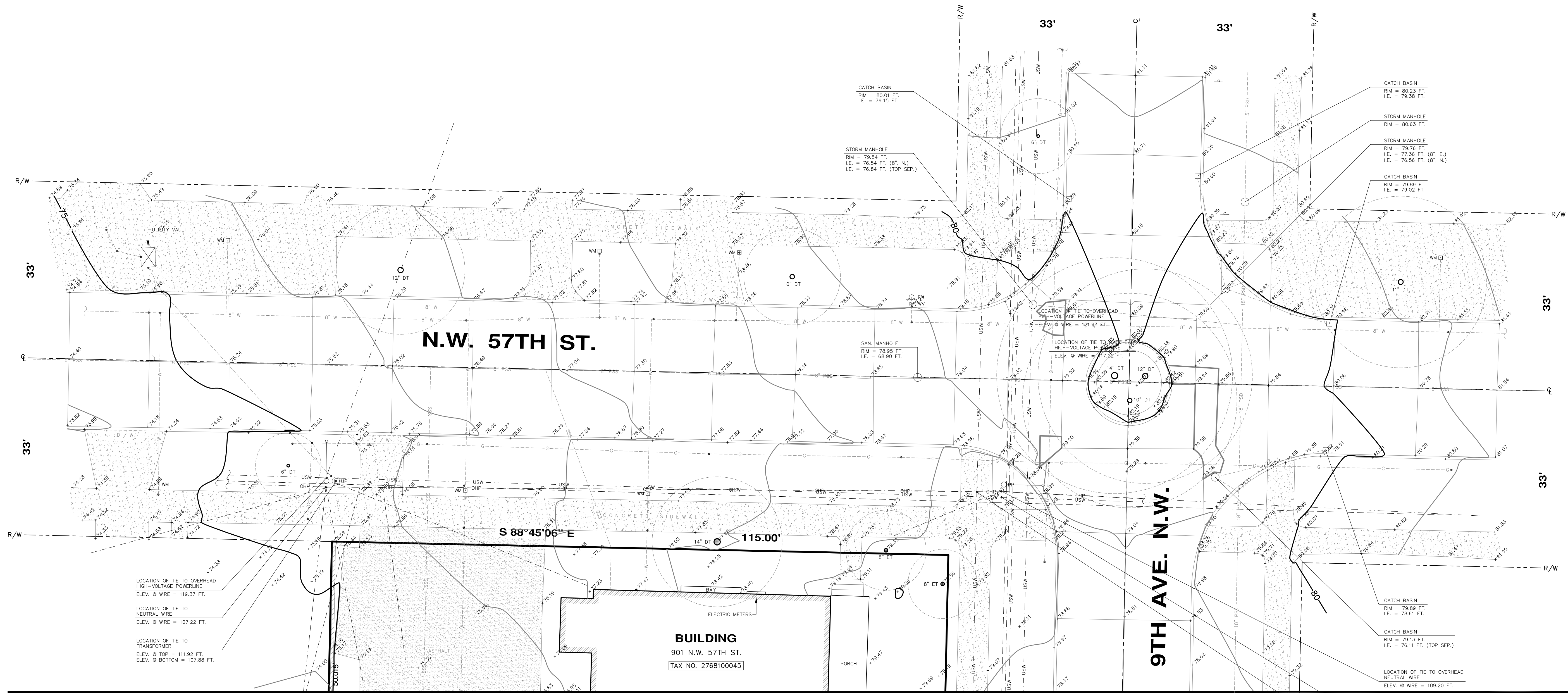
PROJECT #: 19-6536
DRAWING: 19-6536SDOT1.DWG
CLIENT: MODERN HOMES
DATE: 12-23-19
DRAWN BY: SAL



NORTH



SCALE: 1"=10'
LOCATED IN:
S.E. 1/4, N.W. 1/4, SEC.
12, T. 25 N., R. 3 E., W. M.



MATCH LINE

SEE SHEET 3 OF 3

SHEET 2 OF 3



DATE: 12/23/19

TOPOGRAPHIC SURVEY

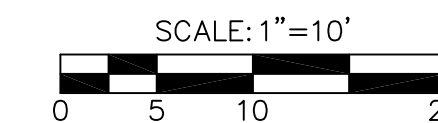
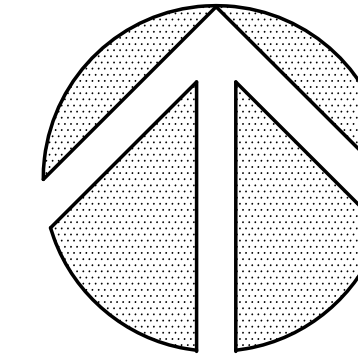
901 N.W. 57TH ST. & 5609 9TH AVE. N.W.

SEATTLE, WASHINGTON

CHADWICK WINTERS

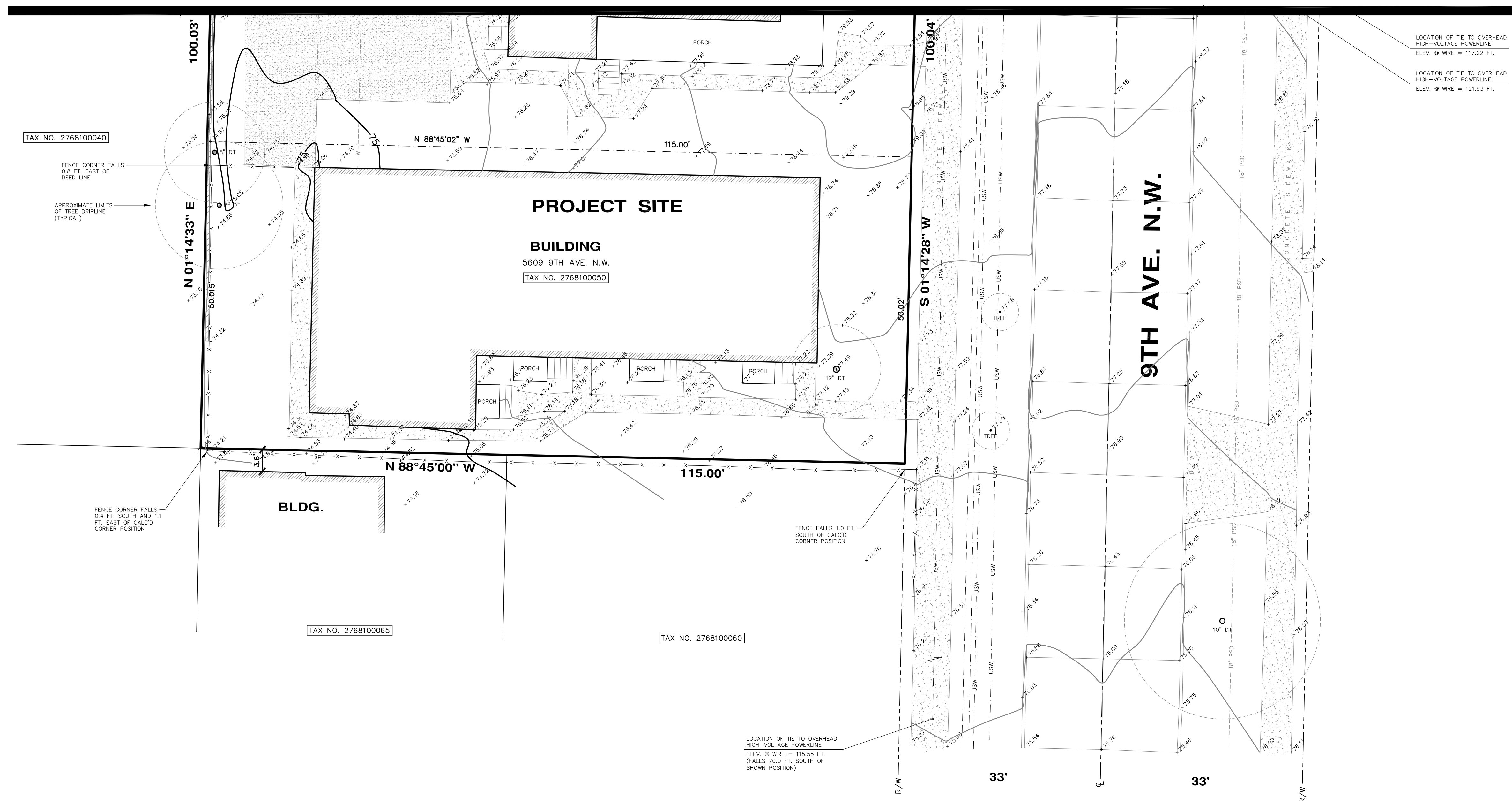
LAND SURVEYING AND MAPPING
1422 N.W. 85TH ST., SEATTLE, WA 98117
PHONE: 206.297.0996
FAX: 206.297.0997
WEB: WWW.CHADWICKWINTERS.COM

PROJECT #:	19-6536
DRAWING:	19-6536SDOT2.DWG
CLIENT:	MODERN HOMES
DATE:	12-23-19
DRAWN BY:	SAL



LOCATED IN:
S.E. 1/4, N.W. 1/4, SEC.
12, T. 25 N., R. 3 E., W. M.

MATCH LINE SEE SHEET 2 OF 3



SHEET 3 OF 3



DATE: 12/23/19

TOPOGRAPHIC SURVEY

901 N.W. 57TH ST. & 5609 9TH AVE. N.W.

SEATTLE, WASHINGTON

CHADWICK WINTERS

LAND SURVEYING AND MAPPING
1422 N.W. 85TH ST., SEATTLE, WA 98117
PHONE: 206.297.0996
FAX: 206.297.0997
WEB: WWW.CHADWICKWINTERS.COM

PROJECT #: 19-6536
DRAWING: 19-6536SDOT3.DWG
CLIENT: MODERN HOMES
DATE: 12-23-19
DRAWN BY: SAL